



Health and Cost Impacts of  
Introducing an Alcohol Duty  
Escalator in the UK

Laura Webber PhD, UK Health Forum

# BACKGROUND

- Non-communicable diseases (NCDs) are the biggest cause of mortality and premature mortality across the UK
- Many are preventable by reducing risk factors such as **alcohol consumption, smoking, BMI and physical inactivity**



- Monitoring trends in risk factors over time is important for policy and healthcare planning
- The present project included 24 different local authorities in England
- Results here focus on national results from England

- 
- Model the long term health impacts of introducing an alcohol duty escalator (ADE) in England

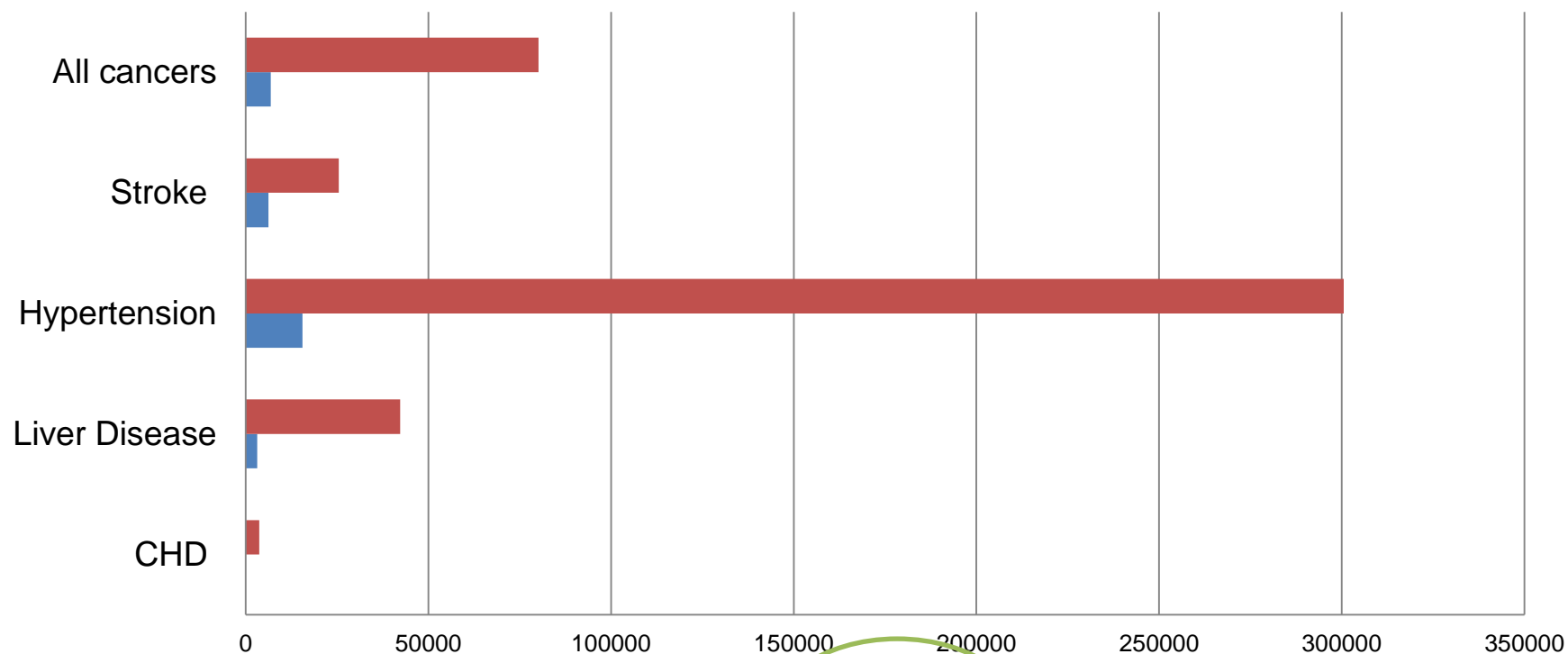


Specifically, the following three scenarios were run:

- **Baseline scenario** (no change in alcohol consumption)
- **Scenario 1. Tax increase scenario:** 1.3% ADE (2% decrease in consumption)
- **Scenario 2. Tax increase scenario:** 13.4% ADE (20% decrease in consumption)

# RESULTS

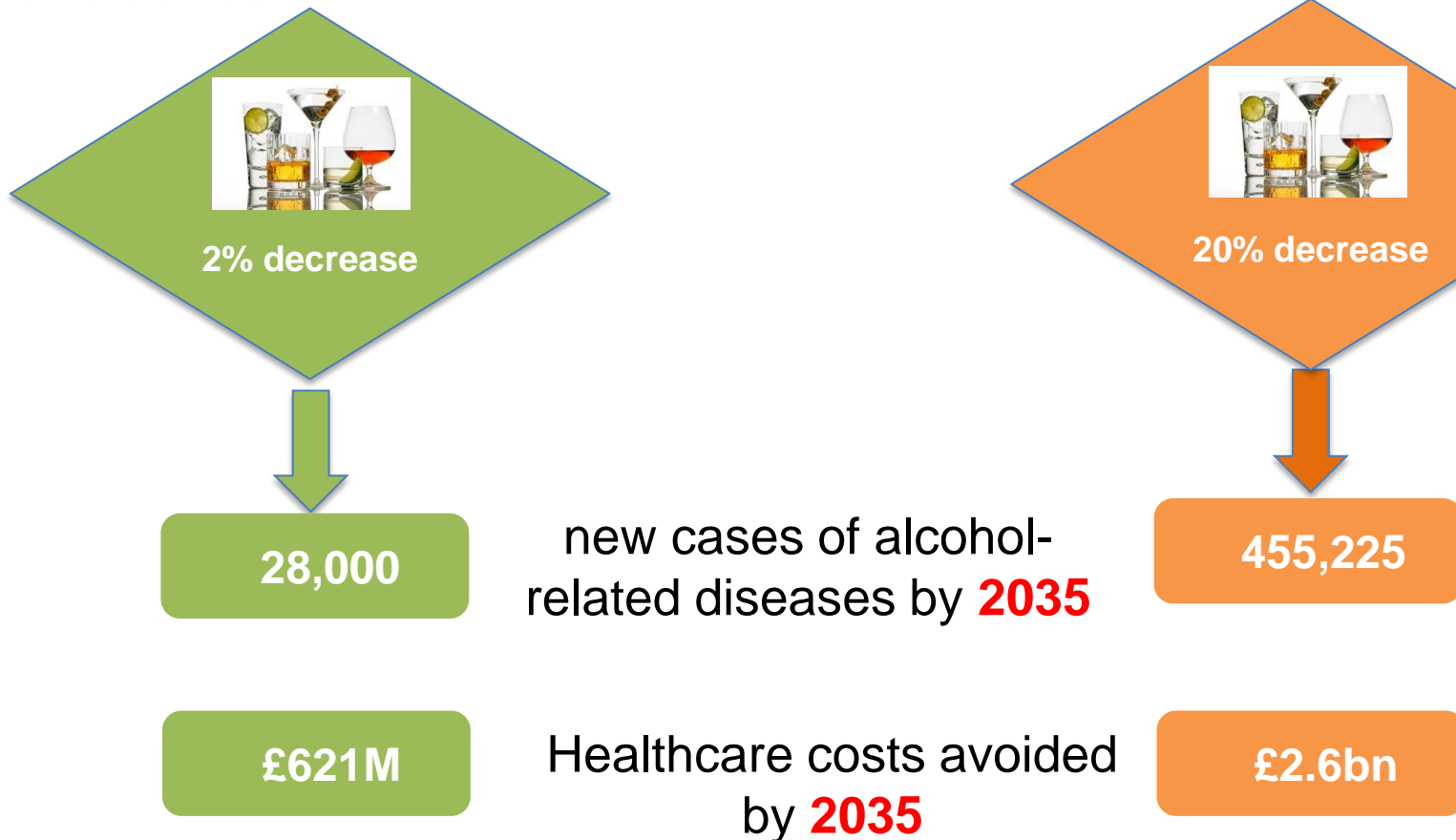
## CUMULATIVE INCIDENCE CASES AVOIDED RELATIVE TO BASELINE BY 2035



	CHD	Liver Disease	Hypertension	Stroke	All cancers
■ Scenario 2	3726	42231	300585	25463	80115
■ Scenario 1	0	3105	15526	6210	6831

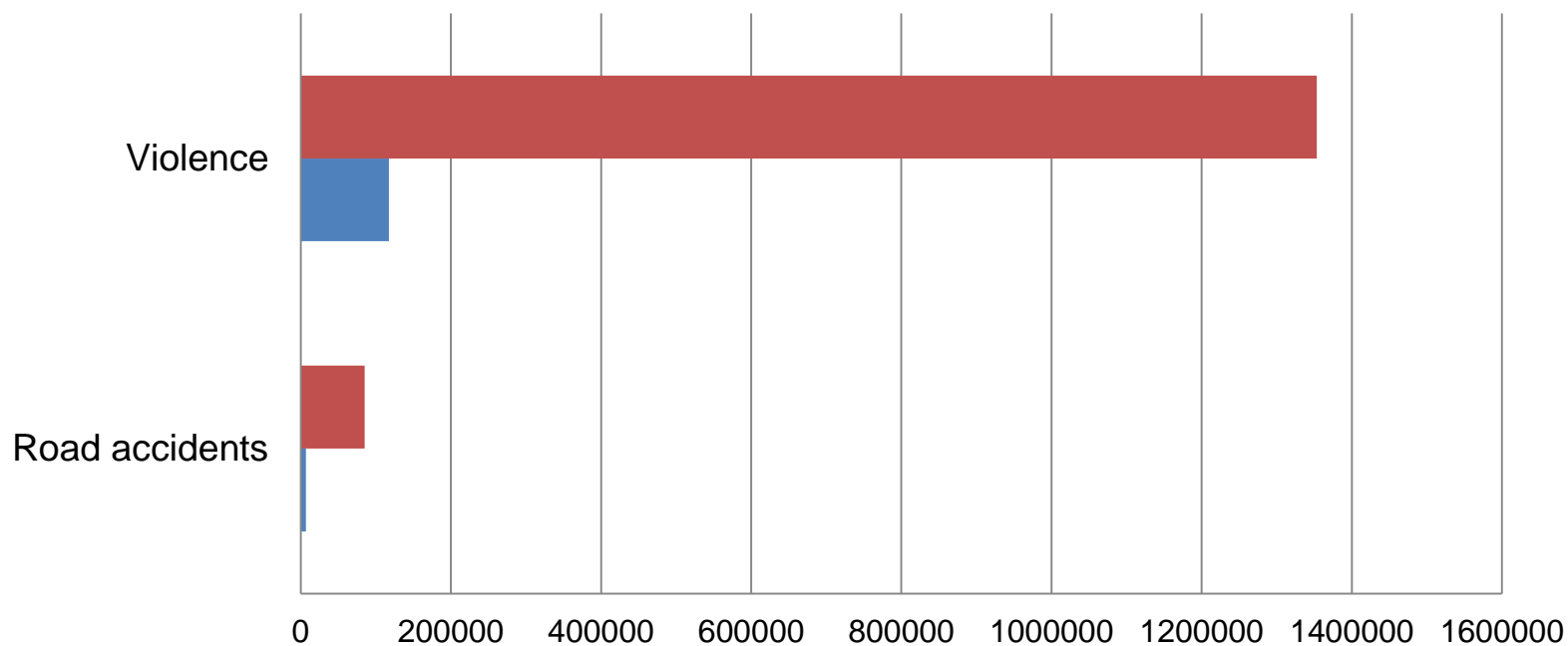
# RESULTS

The increase in alcohol tax is predicted to result in the avoidance of:



# RESULTS

CUMULATIVE INCIDENCE CASES AVOIDED RELATIVE TO BASELINE BY 2035

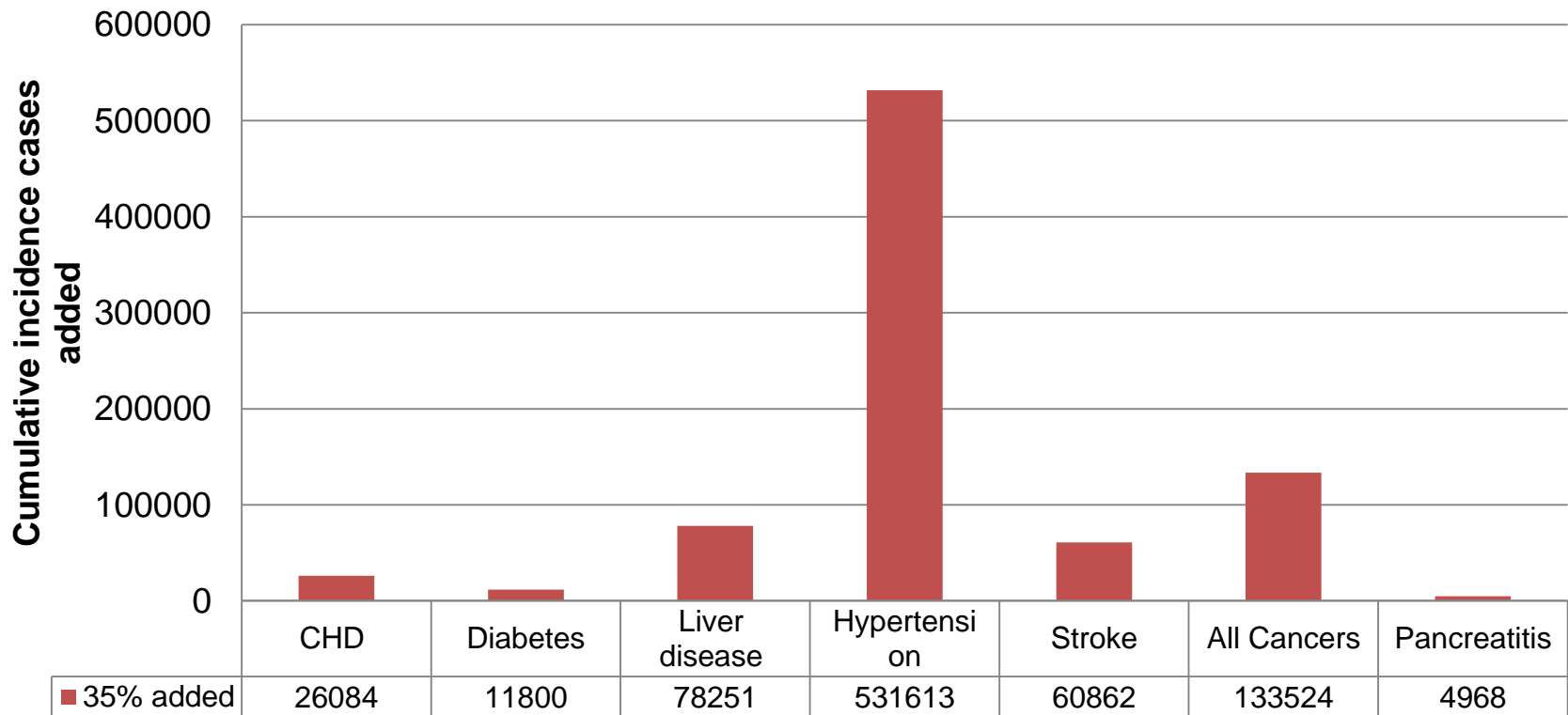


	Road accidents	Violence
■ Scenario 2	85083	1353254
■ Scenario 1	6831	117377

# LIMITATIONS

- A number of **data limitations**

-People under-report alcohol consumption by **35%** so results likely underestimated



# LIMITATIONS

- 
- A number of **data limitations**
    - No data on non-healthcare costs, e.g. lost productivity due to disease, were available, though we included lost salary
    - No data were available to explore **differences by social groups**
    - No standardised protocol for measuring alcohol consumption
    - No relative risks by drinks type – is vodka worse for your health than wine per unit?



# ACKNOWLEDGMENTS

---



## UK Health Forum Modelling team

Abbygail Jaccard

Lise Retat

Andre Knuchel-Takano

Arti Bhimjiyani



Public Health  
England

# Fiscal and pricing policies to improve public health

---

## Aim of project

**Identify** and assess fiscal or pricing policies that could improve England's health



## Objectives

- Develop a framework to help compare and analyse the impact of policies from different policy areas
- Review existing evidence from the UK and other economically developed countries on the health impacts of implementing such policies
- Summarise evidence through the framework lens to provide recommendations of policies to be implemented in England

---

Thank you!